



NATIONALPARK-TOR KELTENPARK



ENTWURF & FUNKTIONSSCHEMA

Der Grundgedanke des Entwurfskonzepts geht mit der Eigenliebe des in Regio "Keltenpark", dem sowohl die Bezeichnung "Keltenpark" als auch "Keltenpark" zugeordnet wird. Aus Richtung der Besucher steigt sich das Gebäude zum Straßenniveau markiert in die Landschaft eingebettet, während es vom Keltenpark aus betrachtet durch Positionierung und Durchgestaltung sichtbar in der umgebenden Natur verschwindet und den Blick auf die Naturparkelemente freigibt.

Zur Eingangsstruktur im Nordosten erweitert der Backstein zugehörig, in Richtung Südosten um die Dachkante des Gebäudes bis auf die Höhe der bestehenden Topografie, so dass es sich harmonisch einfügt, abgrenzt.

Der Backstein wird in seiner Anlehnung an ein Keltenkreuz entwickelt. Durch die Anlehnung der "Keltenkreuz" erfolgt die Verbindung von Straße und Nationalpark, Amphitheater und Keltenpark. Die Gebäudeform führt die Besucher und gewährleistet durch geführte Sichtbeziehungen einfache Orientierung. Im Außenraum entstehen durch den kreuzförmigen gefasste Bereiche, welche die thematische Anlehnung des Backsteins entlang der primären Tätigkeitsbereiche des Hauses spiegeln: Marketing (Eingang, Shop, Gastronomie), Ranger (Verwaltung, Service), Natur (Sichtbeziehung, Naturraum, Amphitheater, Kulturbereich), Bildung (Biosphärenbereich mit Ausstellung und Veranstaltung).

Über die dreifache Einbettung im Norden gelangen die Besucher über einen Wegstreifen direkt zum öffentlichen Eingangsbereich im Nordosten oder der Gastronomie mit Kulturraum im Westen. Eine kleine Wandelung im Maß zur Straße führt Wandel



Keltenkreuz - Step I



Keltenkreuz - Step II



Keltenkreuz - Step III



Erweiterung



Zonierung



Wegbeziehungen



Lageplan 1:1.000



PLATZGLEITENDES MODELL

1:1.50

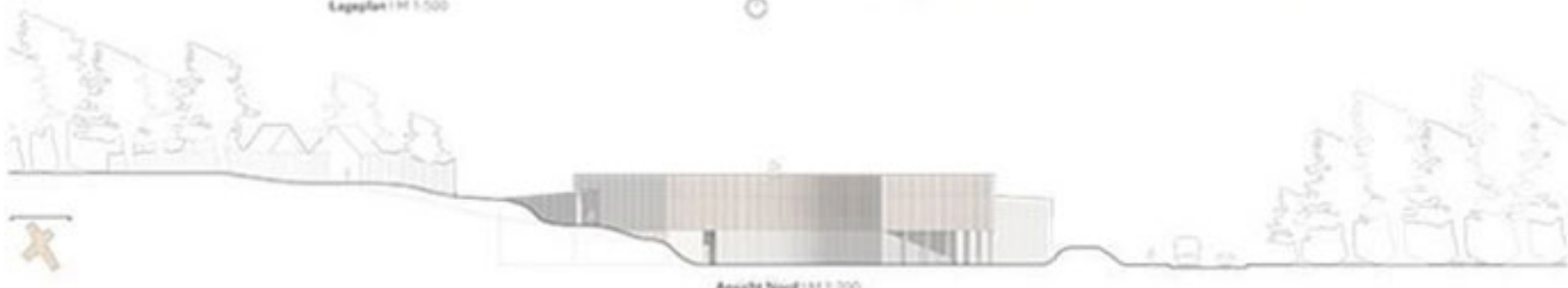
Ein platzgleitendes, naturverbundenes Modell, das den Fuß des anliegenden Wäldes, das die Verbindung des Eingangsbereichs und die Außenfläche der Gastronomie. Es dient gleichermaßen als "Stützpunkt" für eine Wandelung oder Patrick, wie auch als Fahrbahnknoten.



FREILUFTKLASSENZIMMER

1:1.50

Die Terrasse ist ein besonderer Raum im urbanen Sinne in der Natur. Sie ist ein Ort der Begegnung und der Kommunikation, der es ermöglicht, "außen" und "innen" unterschiedlich genutzt werden können. Vor allem genutzt ermöglicht es dem einzelnen Besucher den Blick auf die Region. Nicht nur die Terrasse nach "innen" können die Besucher in Interaktion miteinander treten und es entstehen kleine Treff/Wasserzonen.



Ansicht Nord 1:1.200



Board 4

The proposed design for Board 4 and Board 5 consists of a new approach to connect the campus that will...

The proposed building, while generally an open volume, is designed to provide a series of spaces that will...

Board 4 will be the primary focus of this space as defined by the program, providing a series of spaces that will...

The use of the program is a key factor in the design of the building, which will be designed to provide...

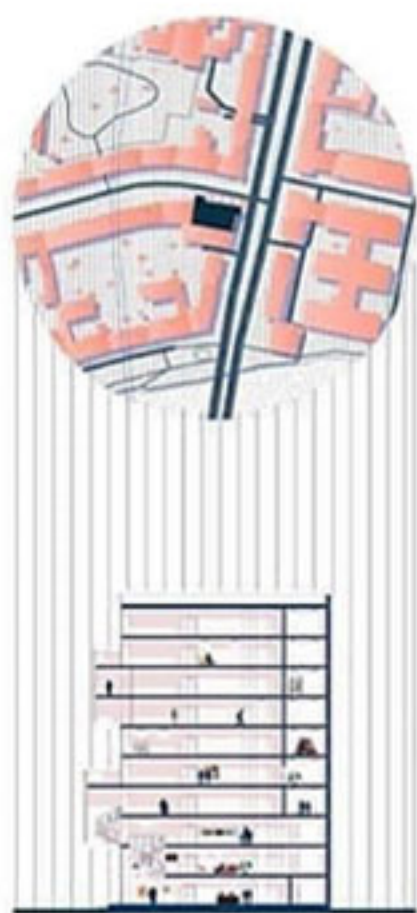


A grid of architectural drawings including elevations, sections, and site plans. Each drawing is accompanied by a small descriptive text box. The drawings show various views of the building and its integration into the site.



Architects VTN Architects
 Location Binh Thanh, Ho Chi Minh, Vietnam
 Architect VTN Architects/Truong Nghia Architects
 Principal Architects Vu Trong Nghia, Tran Thi Hong
 Project Architects Nicholas Joubert, Tran Vu Kim, Karl Lehner
 Area 11900.0 m²

-  Optimization of climate and wind conditions
-  Lower energy consumption
-  Enhancing the ambient conditions
-  As much greenery as possible
-  Maintainability and quality of construction



A-A cut plan

general plan



Stacked Glass Block Headquarters

Bnh Thanh, Ho Chi Minh, Vietnam

//



5 floor plan



4 floor plan



3 floor plan



2 floor plan



1 floor plan

main facade

interior



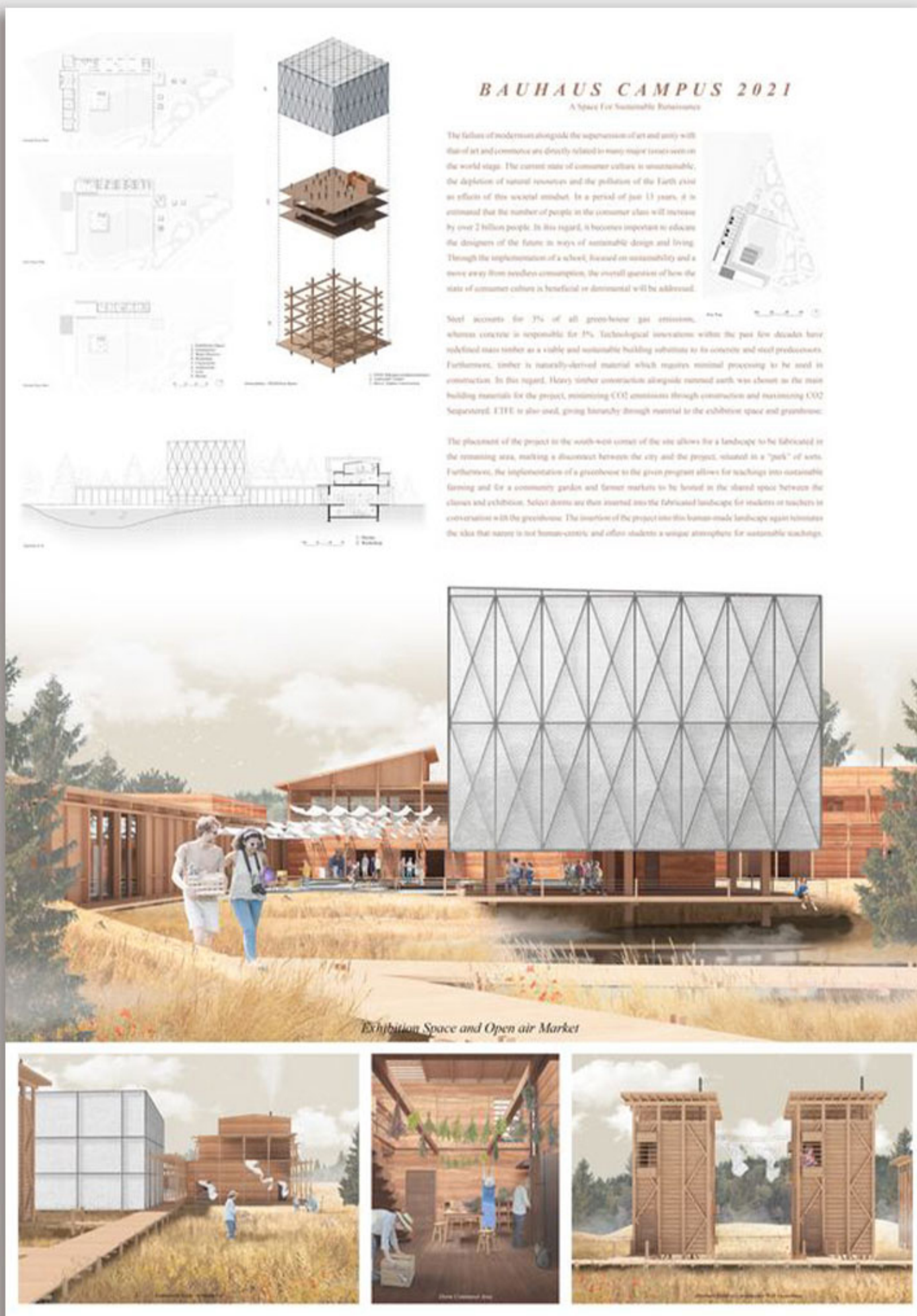
"In the center of Ho Chi Minh City, green coverage ratio is only 0.25%, which is remarkably low in comparison to other Asian megacities. This lack of greenery causes various social problems such as air pollution, overheating, and floods."/>

The 10-story tower is broken down into a 4-story showroom on the lower levels, and office space in the upper 6 floors. Unlike a standard showroom, the space has been designed to integrate a central public space that can serve as a platform for creative community activity. A large glass curtain wall entrance will invite in passers.

Under the rapidly-growing economy, the cities in Vietnam have been developed without long-term perspective or pursuing physical quality. However, in the end, it is extremely uneconomical and gives a huge impact on the environment. The challenge of the project is to improve its maintainability and quality of construction, aiming to the durable architecture that could last for hundreds of years."











BPV

What do the plinth use?

I want to keep your art, keeping you safe, during the night. Having lots of light, I breathe through the plinth. Flying through walls, all air for green. Making sounds of course. Like to party, playing a game, whenever it's time. Along the side, turning across the front, hand to hand. We, having our walls, then all we can do is hold. To you, for me. Play with me.

Wind flow
 How to be in position to be hurtless along with both and take its form with surface.

Program identity
 Proposed classroom were clustered zone from the multipurpose and kitchen.

Plinth mass
 The building masses are organized in a pragmatic yet playful manner.

Roofing plinth
 The plinth joints presents itself as an art service, a poem on ground.

Section details

Legend:

- 1. Slab
- 2. Plinth joint
- 3. Area where floating
- 4. South window foundation
- 5. Concrete slab on top
- 6. Plinth mass
- 7. Light color under roof
- 8. Stone surface base

Roofing detail

Roofing floor wall

The roof masses are designed with timber structure along with stone foundation to support and strengthen earthquake resistance. The plinths frame the learning spaces as treatable volumes enriched with natural light and enhancing efficient movement of air. It stands simple and subtle on a part, in the complex sense.

play with plinth

The Cartesian architecture is a future reflection of the cut-off doors. Daily activities not contradict motion, rather extend it to breathe fresh air and bathing in sun. Here, architecture is itself as a volume for storage, a shelter from rain, and a place to sleep. The raised floor plane becomes the space-maker. Though subtle in presence, plinth establishes itself as the most significant element with the structure engineered for earthquake.

This project explores the meaning of learning space with the very element of plinth as the key medium to communicate with interesting playful dialogues that enrich the learning experience.

Plan 1 to 3

Legend:

- 1. Multipurpose room
- 2. Classroom 1
- 3. Classroom 2
- 4. Classroom 3
- 5. Classroom 4
- 6. Multipurpose room
- 7. Kitchen
- 8. Hall
- 9. Play ground



Location:
Berlin, Germany
Architect:
David
Chipperfield's
Year: 2018



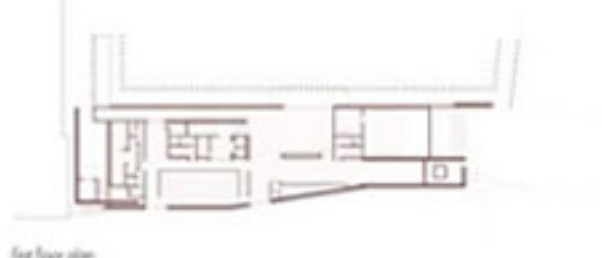
apartments
commercial
garage
government
hospital
hotel
museum
public
school
residential
university



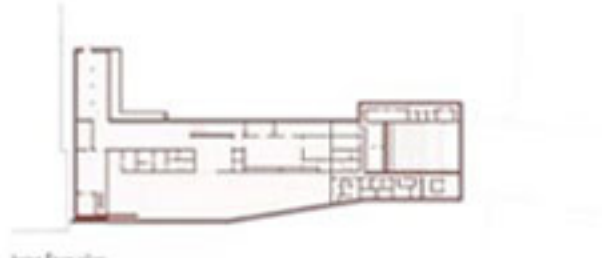
street
subway
cycling
pedestrian
residential area
pedestrian alleys
cycling
subway
cycling platform
parking lot



second floor plan



3rd floor plan



base floor plan

Idea:

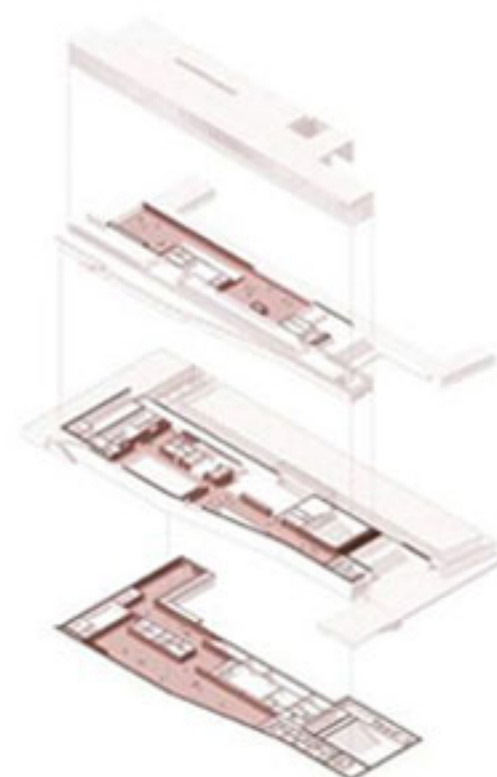
David Chipperfield's James-Simon-Galerie has opened on Museum Island in Berlin. The project serves as a new entrance between the Kupfergraben canal and the Neues Museum. The design was made to welcome large numbers of visitors while housing all the additional facilities needed by the museum. Featuring an iconic colonnade above a stone plinth, the project was made to express a classical piano nobile.



James-Simon-Galerie
David Chipperfield's
2018



gallery interior



Concept:

Together with the 'Archaeological Promenade', the James-Simon-Galerie forms the backbone of the master plan that was developed in 1999 and adopted as the basis for all further planning on Museum Island. The gallery forms a physical connection above ground with the Pergamon Museum and links the museum via the Archaeological Promenade at basement level with the Neues Museum, the Altes Museum and the Bode Museum.

